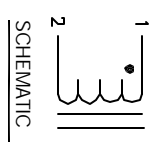


The information contained in this drawing is the sole property of CWS Coil Winding Specialist. Any reproduction in part or whole without written permission of CWS Coil Winding Specialist is prohibited.

REVISION HISTORY

REV	ECN	DESCRIPTION	DATE	BY	CHK	DATE
B		PRODUCTION RELEASE	4/08/05	RLU	JLU	4/08/05



8 BUILT TO ROHS COMPLIANCE AND LEAD FREE

7 WHERE SHOWN, USING A PERMANENT MARKING METHOD  
MARK PART NUMBER AND REVISION

6 BOTTOM CORE AS SHOWN  
APPLY ONE KAPTON TAPE TO COVER THE

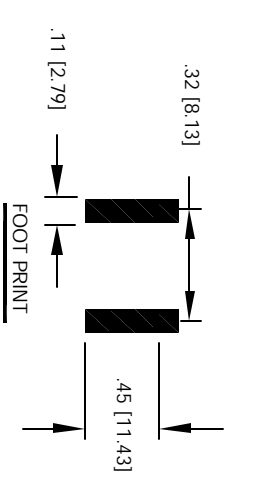
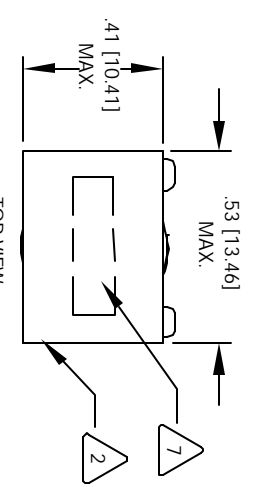
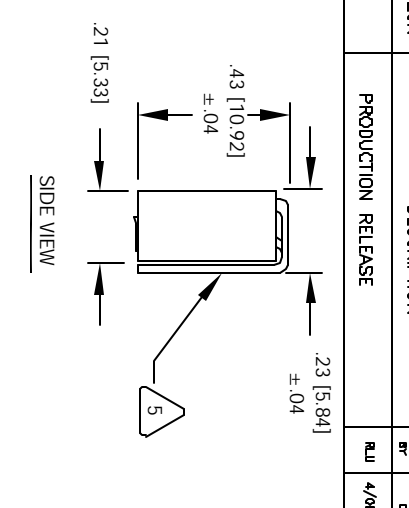
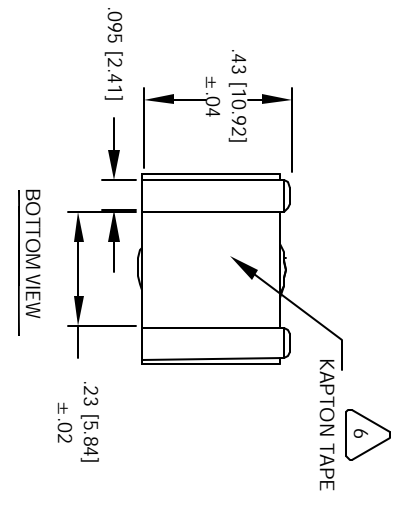
5 FILL WINDING AND CORE WITH EPOXY 2 PART A&B (600°F, 315°C)  
THE LEAD MUST REST FLAT ON PCB.  
REMOVE INSULATION AND TIN LEADS APPROX. 0.43 INCH

4 HELIX WIND 6-3/4 TURNS TIGHT TO CORE AND EVENLY SPACED  
CONSTRUCTION:

3 SPECIFICATIONS @ 25°C  
HIPOT (2 SECOND, 5mA MAX.) 300 VRMS WINDING TO CORE  
DCR = 4.9 MILLI-OHMS MAX. @ 25 °C  
RATED CURRENT = 21A MAX. @ 125 °C  
L = 3.9uH ± 10% , 0.25V, 0.5 A, 100KHz @ 125 °C

2 EPOXY: 2 PARTS A & B (600°F - 315°C)  
WIRE: UL RECOGNIZED 200°C RATED MAGNET WIRE, JIS C3102  
CWS BYTEMARK OR OTHER APPROVED PART  
CORE: HIGH FLUX

1 HELICAL COIL RATING 200°C REQUIRED  
MATERIAL: UL RECOGNIZED 94V-0 FOR FLAMMABILITY  
NOTES: UNLESS OTHERWISE SPECIFIED, READ FROM BOTTOM UP.



A/R	QTY	UM	CODE	IDENT	MFG. P/N	DESCRIPTION	ITEM NO.
1	1	EA	CWS	8265-5	EPOXY 2 PARTS A&B (600°F, 315°C)		5
1	1	EA	CWS	KAPTON TAPE	KAPTON TAPE, 0.25 Wx .42		4
1	1	EA	CWS	E128174	BLK. KAPTON TAPE, 0.375" W x 2.0"		3
1	2	EA	CWS	395275	2.4x .3mm RIBBON WIRE		2
1	1	EA	CWS		HIGH FLUX CORE		1

UNLESS OTHERWISE SPECIFIED		PARTS LIST	
UNLESS OTHERWISE SPECIFIED	DATE	CWS Coil Winding Specialist	
TOLERANCE PER FIG 11.5M	DATE	1510 E. Edinger Ave	
ALL DIMENSIONS ARE IN INCHES AND [MILLIMETERS]	DATE	Unit B, Santa Ana, CA, 92705	
TOLERANCE INCHES	DATE		
XXXX±.002	XXXX±.015		
XXXX±.005	XXXX±.030		
XXXX±.127	XXXX±.38		
ANGLE PROJECTION			
DO NOT SCALE DRAWING			